



SOUTHERN
METROPOLITAN
CEMETERIES TRUST

Environmental Strategy

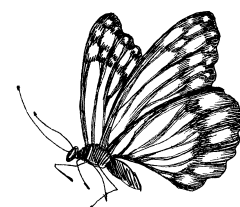
2022 – 2025





Contents

A Message from our Chair	2
Welcome to our Environmental Strategy	3
About SMCT	5
Our Commitment to Environmental Sustainability	6
Introducing our Environmental Strategy	8
Biodiversity	10
Sustainability	12
Energy use	14
Waste and recycling	15
Emissions	17
Our Sustainable Future	19



Acknowledgement of Country

The Southern Metropolitan Cemeteries Trust (SMCT) respectfully acknowledges the Bunurong Boon Wurrung and Wurundjeri Woi-Wurrung people of the Kulin Nation as the Traditional Owners of the land on which our beautiful grounds are located and pay our respects to their Elders past, present and emerging.

SMCT is committed to working alongside Aboriginal and Torres Strait Islander peoples and communities in the delivery of our Environmental Strategy.



A Message from our Chair

I am honoured to introduce our inaugural Environmental Strategy for the Southern Metropolitan Cemeteries Trust (SMCT).

As an organisation whose primary purpose is to care for our community, we also have a responsibility to care for our environment by taking ownership for our actions and impact on the planet. Through our Environmental Strategy, we aim to ensure the decisions we make today enable our organisation to provide resilient and sustainable services and facilities into the future.

At its heart, sustainability is about protecting our natural and built environment for future liveability and ecological balance. Our grounds offer spaces of reflection, connection, and natural beauty for our community. As curators of public space in perpetuity, we are uniquely placed to directly care for both our community and the environment in which we operate.

This Environmental Strategy defines our commitment to environmental sustainability and outlines how this commitment aligns with our broader framework, plans and policies. It details our environmental targets and commits us to working collaboratively with our employees, community, and stakeholders to ensure our sites are managed with consideration for the environment.

This Strategy details our environmental initiatives across five key areas: biodiversity, sustainability, energy use, waste and recycling, and emissions reduction. It outlines our ambition to go further in our environmental leadership in the cemeteries industry and to contribute to an environmentally sustainable future for Victoria.

As an organisation, and as individuals, we are excited to take these steps together with our community and stakeholders to improve and advance environmental sustainability across our natural and built environment for future generations.

Dr Vanda Fortunato

Southern Metropolitan Cemeteries Trust Chair





Welcome to our Environmental Strategy

SMCT is committed to ensuring all our activities are managed in an environmentally responsible manner. That's why we've established our Environmental Strategy to adopt sustainable practices and development across our operations for the long-term benefit of our communities and the planet.

Established in 2010, the Southern Metropolitan Cemetery Trust (SMCT) is a community based, public entity organisation, committed to serving all Victorian communities. And, in an era of climate change, we see environmental responsibility as part of that commitment to community service, both now and into the future.

SMCT is a large and growing organisation with more than 300 employees. We are a Class A cemetery trust, managing nine sites – some dating back to the 1850s – that occupy 362 hectares. From events, hospitality and retail through to our core business of land management, burials and cremations, SMCT is a busy and complex operation with numerous touchpoints for environmental responsibility.

Before developing our Environmental Strategy, SMCT had already engaged in a range of initiatives and commitments dedicated to managing our

environment responsibly. An independent report into our efforts found our overall environmental performance was excellent, with initiatives that included:

- acknowledgment of climate change's urgency and steps to transition to a low-carbon operational model;
- significant time and resource investment into assessing and measuring our environmental performance and setting targets;
- emissions tracking;
- more efficient water use and improved waste management;
- increased biodiversity;
- provision of natural burial options;
- solar power use; and
- sustainable packaging and recycling efforts.





Our Environmental Strategy, however, represents SMCT's ambition to go further in our environmental leadership in the cemeteries industry.

This will be demonstrated by our commitment to meet or exceed the Victorian Government's emissions reduction and waste diversion targets. In addition, we will establish a world standard Environmental Management System, which will seek to address universally accepted markers for best environmental practice, including:

- protecting the environment;
- preventing pollution;
- using resources sustainably;
- pursuing water and energy conservation;
- adapting to and mitigating the impacts of climate change; and
- building biodiversity and restoring natural habitat.

SMCT acknowledges the Traditional Owners of the land on which our nine sites are situated and we are working towards developing our inaugural Reconciliation Action Plan (RAP). We will seek input from Aboriginal and Torres Strait Islander people and communities in relation to cultural knowledge, practices, and traditions to sustainable and equitable development and environmental management.

Finally, we're also putting in place a 'precautionary principle'. This means that if there's significant uncertainty about whether a product or practice may be harmful to the environment, we'll cease that practice or product's use as soon as practicable.

SMCT is excited to use this Environmental Strategy to contribute to an environmentally responsible and sustainable future for Victoria.





About SMCT

SMCT is a community-focused organisation, providing burial, cremation, and memorialisation services for metropolitan Melbourne and Victoria.

We are proud to be custodians of history, working with cultural and religious community groups to provide meaningful services across each location. We are also redefining the traditional role of cemeteries and memorial parks through community service offerings and reflective spaces and gardens. Through these spaces we aim to encourage the honouring of traditions, the sharing of stories, and community connections.

Our services include:

- Interment in graves and mausolea
- Cremations and interment of cremated remains
- Memorialisation
- Wellness and support centre
- Café, hospitality, and venue hire
- Florist
- Community events
- Cemetery and genealogical records
- Perpetual maintenance of grounds

Our purpose, vision, and values

Purpose: We believe that every person, regardless of their religion, culture or personal preference, should be able to honour and celebrate their loved ones as they choose.

Vision: Our beautiful, iconic locations empower all communities to honour and celebrate life. Through our innovative approach of personalised care and compassion, we support the living throughout their grief journey.

Values: At each cemetery and memorial park, we pledge to each other and to our client families that we will act with:

Passion – commitment in heart and mind

Respect – by valuing every voice

Integrity – doing what is right

Dedication – to the needs of our clients and our people

Empathy – to listen and reflect with sensitivity

Our sites

SMCT is entrusted to manage and maintain in perpetuity the locations for which we are responsible:

- Bunurong and Cheltenham Memorial Parks; and
- Brighton General, Cheltenham Pioneer, Dandenong Community, Melbourne General, Sorrento Community, Springvale Botanical, and St Kilda cemeteries.

We aim to be effective environmental stewards of our cemeteries and memorial parks and will take our environmental responsibility further through our Environmental Strategy.



Our Commitment to Environmental Sustainability

Climate change and the environmental issues that stem from it is an urgent international concern. Communities around the world expect all businesses and organisations to respect and care for the environment.

Already esteemed for our environmental stewardship, as a Class A cemetery trust SMCT aims to be an industry leader through achieving our best possible level of environmental management. That is why SMCT developed an Environmental Policy to inform our Environmental Strategy.

Our Environmental Policy

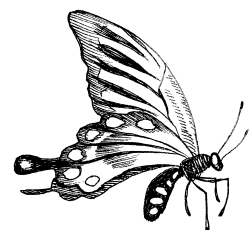
Our Environmental Policy has at its core a commitment to implementing an accredited, world-standard Environmental Management System (EMS). We will use the EMS to proactively monitor and improve our environmental performance in the key indicator areas of:

- environmental protection;
- pollution prevention;
- sustainable resource use;
- water and energy conservation;
- climate change mitigation and adaptation; and
- biodiversity and restoration of natural habitat.

Our Environmental Policy commits us to working collaboratively with our employees, communities, suppliers, other cemetery trusts, and stakeholders to ensure our operations and activities are completed in an environmentally responsible and sustainable manner.

For the long-term benefit of our communities, our policy also commits us to:

- ensuring environmental impacts and assessments are integral to decision making and planning;
- seeking low environmental impact options for products and services and fostering a culture of low environmental impact;
- a 'precautionary principle': where significant uncertainty exists about a product or practice's environmental harm, we will cease its use as soon as possible;
- creating awareness amongst our employees, funeral directors, and customers about sustainable practices, products, and initiatives;
- collaboration and consultation with other Class A cemeteries on new sustainability initiatives and technologies, including provision of low environmental impact burial and funeral products; and
- delivering timely and transparent environmental performance reports to key stakeholders.





Working with Traditional Owners for a better environmental future

SMCT's nine cemeteries and memorial parks are located on the lands of the Bunurong Boon Wurrung and Wurundjeri Woi-Wurrung people of the Kulin Nation. We pay respects to their Elders past and present and recognise their care for and stewardship of the environment on these sites for thousands of years.

At the time of this Strategy's release, SMCT had just begun the development of our inaugural Reconciliation Action Plan (RAP). We have applied Reconciliation Australia's tested framework

and we intend that our RAP will establish organisational actions to develop respectful, meaningful relationships and conversations with Aboriginal and Torres Strait Islander peoples and communities.

As we implement our Environmental Strategy, SMCT will seek input from Traditional Owners, communities, and cultural representatives. We look forward to Aboriginal and Torres Strait Islander people's contribution of cultural knowledge, practices, and traditions that will encourage sustainable environmental management and equitable development.





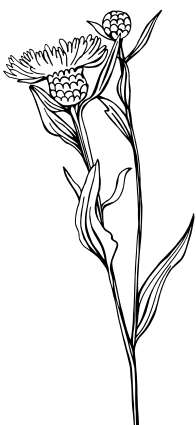
Introducing our Environmental Strategy

SMCT's Environmental Strategy (2022-2025) represents our commitment to the community that we will manage our environmental responsibility to industry leading standards.

We will implement an accredited, world-standard Environmental Management System that will track our efforts and guide our Strategy's actions in five key environmental areas:

- Biodiversity
- Sustainability
- Energy use
- Waste and recycling
- Emissions

Our Strategy commits SMCT to meeting or exceeding Victoria's legislative requirements for current and future emissions reductions, waste management, and sustainable resource use, as presented in Figure 1.





Target/ measure (2022 baseline)	FY2025	FY2030	FY2035	FY2045	FY2050
Renewable energy use	100%	100%	100%	100%	100%
Reduce greenhouse gas emissions	35%	50% or more	80% or more	100%	
Divert waste from landfill	25%	80%			90%
Reduce food and organics waste	25%	50%			75%
Biodiversity	FY2037 - Net gain of the overall extent and condition of SMCT's natural habitats				

Figure 1. SMCT's environmental targets

And, though our Environmental Strategy is phased across three years, SMCT completed the following in the 2023 financial year:

- a **Waste Management Strategy** to improve quality, efficiency, and effectiveness of our waste processes. It included infrastructure upgrades, new signage, and an education and behaviour change campaign for customers and employees;
- **energy and water efficiency audits** to inform building and facility upgrades to reduce energy and water consumption, and greenhouse gas emissions;
- a **Water Management Strategy** to improve planning, management, quality, and use of water across our sites;
- analysis of **emerging sustainable cremation options**, focusing on infrastructure and environment;
- **natural burial standards** to improve communication of natural burial options and processes to customers, stakeholders, and employees, progressing our work on greenhouse gas emissions reduction;
- **reduced-plastic, biodegradable floristry** through collaboration with industry and government stakeholders, including research into alternative floristry packaging and plastic plot vases, and phasing out unnecessary plastic packaging at SMCT's florist;
- **solar optimisation assessment** of solar energy generation and storage, including optimal upgrades, all delivered at our Brighton, Bunurong, Melbourne, and Springvale sites;
- **Springvale Microforest Project** at Springvale Botanical Cemetery to improve local native habitat and biodiversity, and offset greenhouse gas emissions; and
- **Project Cultivate** pilot at Melbourne General Cemetery, which will test more sustainable planting species and practices with the aim to elevate horticultural standards and roll out to other heritage sites in future.





Biodiversity

Biodiversity means there are enough different plant and animal species in any environment to ensure a flourishing ecosystem. Biodiversity is vital for life and, even before developing our Environmental Strategy, SMCT had worked hard to increase biodiversity at all our sites.

At Springvale Botanical Cemetery, we have 11,000 trees, with species from around the world. These include eucalyptus, elms, oaks, birches, and palms, providing food for native and exotic animals, including the birds that attract birdwatchers' clubs.

We protect and care for our thriving possum population at Bunurong Memorial Park, our 12 beehives at Springvale Botanical Cemetery, and the lizards, ladybugs, bats, and abundant bird life found across SMCT's cemeteries and memorial parks.

Our Environmental Strategy commits us to increasing biodiversity at all SMCT's sites into the future.

By supporting and increasing biodiversity, we will restore, protect, enhance, and preserve SMCT's natural habitats for current and future generations.





Our biodiversity commitment

Our commitment supports biodiversity strategies that local councils in our sites' municipal areas have established, along with 2023's Project Cultivate, a pilot project at Melbourne General Cemetery that aimed to improve horticultural standards. The successful pilot included application of organic mulch and non-invasive, locally native plants. This will lead to native grassland development, an increase in biodiversity, a reduction in run-off and erosion, and decreased reliance on herbicide to manage invasive weed species. We plan to roll out Project Cultivate across all our sites.



Our 300-year-old eucalyptus tree outside Café Vita et flores at Springvale Botanical Cemetery. We carefully protect and monitor this magnificent tree and have installed an irrigation system under the café's decking that floods the tree when needed to simulate its preferred natural watering cycle.

As part of our Environmental Strategy, we will also develop a Biodiversity Strategy to guide our actions, which will include:

A plant and animal inventory. This will identify priority areas for restoration and the status and management of invasive species, while examining species' climate resilience. To increase revegetation for habitat interconnectivity, we will also map food sources and habitats of potentially vulnerable or threatened species or areas.

Species management. We will develop an approach to ongoing management of native and non-native species. This will include a tree replacement strategy and specific nutrient and water care regimes.

Improving biodiversity resilience. We will do this by choosing the appropriate plants for particular habitats, especially through seeking drought-tolerant and climate ready species. We will also evaluate the potential impact of climate change on any species we adopt.

Clear planning. We will develop targets, frameworks, principals, and objectives to maintain, enhance, and increase biodiversity.

Pest and predator control. We will develop a plan that continues to manage these, including strong weed control and management.

Wetlands. We are completing a water management strategy that will inform the maintenance and development of SMCT's lakes, wetlands, and irrigation systems.





Sustainability

All the resources we use in our daily lives are finite. Sustainability means seeking to use those resources wisely so that they are available for future generations to use.

SMCT is already working hard to prioritise sustainability at our sites. At Springvale Botanical Cemetery, we have taken the revolutionary step of using goats to control weeds instead of chemicals. At several sites we have nurtured and introduced ladybird, lacewing, and aphidius populations that clear our roses of the aphids that normally require pesticides to control them.

Where possible we repurpose trees for environmental initiatives such as turning fallen logs into seating and hollowing them out for animal habitats. We also endeavour to mulch and reuse organic materials on the lands we manage.

These are just some of many initiatives that SMCT has implemented as part of our Environmental Strategy to ensure our cemeteries and memorial parks are industry benchmarks for sustainability.

Our sustainability commitment

Our communities have voiced their desire for environmentally friendly funeral and memorial options. Supported by our social and sustainable procurement framework, we will purchase materials, goods, and services in a sustainable manner.

SMCT's Environmental Strategy will see us progress a host of projects and initiatives aimed at ensuring a sustainable future for all our sites:

Stormwater management. By displacing litter, sediment, and debris, stormwater can negatively impact the environment. We will review our stormwater management systems to ensure best practice, including initiating a stormwater quality monitoring regime. We will also increase vegetation in our sites' swales – the channels in the land that collect and transfer stormwater. This will mean an increase in the volume of stormwater our land can soak up.





Rainwater harvesting is an efficient way to collect and use this precious resource. We can use rainwater for irrigation, cleaning, and bathroom applications, and maximise our current rainwater harvesting. We will also install new rainwater harvesting infrastructure wherever possible.

Nutrient run off management. Excess nutrient which run off into waterways can cause algal blooms that harm aquatic species and threaten ecosystem health.

Chemical use overhaul. The use of certain chemicals can negatively impact the environment. An independent study recently showed SMCT has good storage, labelling, and application guidelines for our chemical use. We will, however, conduct an organisation-wide chemicals analysis to ensure our chemical use does not negatively impact our sites' ecosystems.

Biodegradable floral arrangements. Floral arrangements used at funerals and memorials usually contain a mix of components that do not biodegrade. These include polystyrene, wire, and ribbons. This makes separation of

components into respective waste streams difficult and results in a significant amount of waste going to landfill. SMCT will collaborate with other cemeteries, religious groups, florists, and suppliers to find biodegradable substitutes for structuring flower arrangements. Our goal is for the Food Organics Garden Organics (FOGO) waste stream to accept all SMCT's floral arrangements and enhance our contribution to diversion of waste from landfill.

Environmentally friendly flower holders. We aim to phase out the use of plastic flower vases placed at graves and other settings in SMCT's cemeteries and memorial parks. These cause a significant litter issue and negatively impact the environment. We will investigate natural plant based fit-for-purpose alternatives in collaboration with industry and government agencies.

Earthworks management. To minimise discharge of sediment that can cause environmental harm, we will review and where necessary update our earthworks management plans for any new site developments.



SMCT floral products include native flowers and biodegradable packaging



Energy use

It takes a significant amount of energy to deliver SMCT's services to our communities. Our cremation technology, garden maintenance, offices, cafés, and function rooms all must be powered efficiently.

The world is moving to a low-carbon future and SMCT is playing its part by using energy wisely. As a Class A cemetery trust, that includes our commitment to the Whole of Victorian Government emissions reduction pledge. A component of that pledge means that by 2025 we will source 100 per cent renewable energy for our operations.

We currently use solar power panels on several rooftops to contribute to our energy needs, but our Environmental Strategy will see us increase that and put in place many other developments to increase our energy efficiency.

Our approach to energy use

We will seek to use the renowned Green Star energy rating system. Green Star holistically assesses and certifies an organisation's energy use. Gaining Green Star accreditation is a way we can ensure our approach to energy use will:

- reduce climate change's impacts;
- enhance human health and quality of life;
- restore and protect biodiversity and ecosystems;
- drive climate resilience in buildings, fit-outs, and communities; and
- contribute to market transformation and a sustainable economy.

Our Environmental Strategy will see SMCT transform our energy use through several projects and initiatives:

Building and energy audit. Part of Green Star accreditation, we will conduct a building and energy audit of our operations to see where we can further improve our energy use. This means we will consider if we need to introduce new, replace or upgrade:

- equipment (e.g. screens, refrigerators, lighting);
- energy systems (e.g. air conditioning and heating);
- building resilience (e.g. insulation); and
- water efficiency measures (rainwater capture and use).

Electrification and other energy efficiencies.

Flowing from our building and energy audit, we will introduce many energy efficiencies, especially via electrification. This includes commitment to:

- upgrading to LED lights wherever possible;
- upgrading appliances, energy systems, vehicles, and tools to electric models; and
- investigating electric-powered cremation solutions.

Maximising solar power. SMCT already uses solar panels as part of our commitment to efficient and environmentally responsible energy use. Our Environmental Strategy will see us maximise the use of solar power on all our sites.

Purchase renewable energy. Even when maximising our use of solar power, SMCT will need to supply some of its energy needs via the electricity grid. To do this in the most environmentally responsible way, we will purchase renewable energy through the Victorian Health Building Authority as part of our 100 per cent renewable electricity pledge by 2025.



Waste and recycling

SMCT has for many years been committed to reducing waste on our sites, recycling materials, and using in our operations green recycled materials wherever possible.

In 2022, our continued efforts saw a 20% annual decrease in the waste we sent to landfill, an amount we will bring down markedly in future as we pursue the waste and recycling commitments stated in our Environmental Strategy.

Currently, to reduce food, plastic, and container waste, we provide all employees with reusable Bento boxes and coffee cups for their lunches and beverages. And, in the key area of rose garden development and maintenance, we support many of our numerous rose bushes with stakes made from fully recycled material.

As our Environmental Strategy is implemented, SMCT's sites will become - more than ever - places that say no to waste and yes to recycling.

Our Environmental Strategy and waste and recycling

Through our Environmental Strategy's focus on improved waste management, SMCT's wide-ranging plans will see us significantly reduce waste to landfill, increase our recycling efforts, and our use of recycled materials. These commitments include:

A site-wide waste audit. In 2023, SMCT completed an audit on the amount of waste our operations generated, allowing us to plan our best approach

to future waste management. The audit included examining our staff and contractors' waste disposal behaviours to find out what was going to landfill and what was being collected for recycling.



Waste management strategy. We have developed a dedicated waste management strategy, which includes tailored solutions to deal with waste generated by our office operations, cafés and other hospitality venues, florists, chapels, and community use of our grounds. The strategy will focus on improving waste separation (i.e. organic from hard waste; recyclable from non-recyclable) and better organic waste management.





We will conduct further waste audits periodically to track our progress on meeting our targets for diverting waste from landfill.

Improved waste separation and recycling. As part of our waste management strategy, we will build on our current waste separation and recycling efforts. This will include verification of recycling processes to ensure no contamination of recyclables (i.e. non-recyclable items ending up in recycle bins). This will involve working closely with our waste and recycling contractors to assess and affirm best practice. Our approach to waste and recycling will also be enhanced through investigation of:

- eliminating bottled water from our retail outlets;
- going paperless in our offices;

- finding ways to reduce packaging across our operations; and
- continuous improvement to e-waste collection processes.

Improved organic waste management. SMCT must manage a significant amount of organic waste, from food, flowers, and other plant matter. We will seek to improve our organic waste management through:

- investigation and implementation of an onsite organic waste solution;
- surplus food donation to local charities; and
- industry collaboration to ensure SMCT only supplies biodegradable flowers in biodegradable packaging.





Emissions

Our approach to emissions reduction

Greenhouse gas emissions refers to the release of carbon dioxide (CO₂) into the atmosphere. The world is moving to a low carbon future and SMCT must play its part to reduce emissions generated across our sites and operations.

When considering any organisation's contribution to emissions, all aspects of operations are taken into account. For SMCT, our areas of concern include emissions that result from:

- burial and cremations;
- production of concrete, often used in gravesites and site pathways;
- production of other materials used in our buildings; and
- services and operations delivered across our sites.

We have previously investigated and taken action in all of these areas. And, as part of our efforts to reduce emissions, SMCT has turned over to the natural environment part of our Springvale Botanical Cemetery. This acts as a 'carbon sink' (anything that absorbs more carbon from the atmosphere than it releases) and reduces SMCT's emissions profile.

For the betterment of our communities and the planet, our Environmental Strategy will see SMCT significantly increase our commitment to a low carbon future.

Our Environmental Strategy and emissions

Through our Environmental Strategy, we will do all we can to contribute to a low carbon future.

Our improved approach to waste separation and organic waste management (see Waste and Recycling section, p.15) will reduce our emissions. And our Strategy's commitment to renewable energy and electrification (see Energy section, p.13) will also help minimise our emissions.

Our Environmental Strategy, however, includes major initiatives that aim to further drive down our emissions:

Lower-emission cremation and burial. Burial and cremation have carbon emission impacts, with cremation the lower emission alternative. We will, however, investigate further decreasing emissions from cremation, particularly through pursuing a move away from gas-powered technology, and steps to improve emission filtration systems. Grave maintenance and use of concrete are major contributors to burial emissions so our efforts in these areas will contribute to lowered emissions from burials. Our natural burial options, however, also offer a lower emission alternative. In addition, SMCT are taking a forward-thinking approach to cremation and burial by keeping abreast of emerging sustainable alternatives, reflecting our commitment to ethical and environmentally responsible practices.





Materials strategy for lower emissions. The materials SMCT uses for graves, pathways, buildings, and other infrastructure have an impact on our emissions profile. We will develop a strategy that commits us to a future of using only materials that take the lowest possible amount of carbon emissions to produce. To do this, our materials strategy will focus on:

- **Dematerialisation.** This means avoiding or reducing the use of materials as much as possible. Every material we use must have a clear function and purpose.
- **Materials choices and substitution.** We will substitute high-emissions impact materials with lower ones wherever possible.
- **Procurement.** We will use products that have Environmental Product Declarations (EPDs) and carbon reduction strategies.
- **Manufacturing and logistics.** This means prioritising products manufactured locally and/or with low-emission transport solutions.

- **Packaging.** Whenever possible, we will use products with fully recyclable packaging.

Purchase of carbon offsets. Carbon offsets are a way organisations can make up for carbon emissions by investing in environmental sustainability projects elsewhere in the world. We will prioritise our onsite approach to emissions reduction, but purchasing carbon offsets will form part of our Environmental Strategy. We will investigate the most accredited and effective carbon offset programs in which to invest.

Springvale Microforest. We are developing this project at Springvale Botanical Cemetery to regenerate local native habitat, increase biodiversity, and offset greenhouse gas emissions. The microforest will also allow visitors to immerse themselves in nature and learn about local flora and fauna.





Our Sustainable Future

Our Environmental Strategy is SMCT's public commitment to environmental responsibility in our operations now and into the future.

Environmental challenges in our local communities and worldwide mean doing nothing is not an option. We will partner with First Nations' people, government, other cemetery trusts, industry, contractors, retailers, and suppliers to do all we can to ensure the cemeteries and memorial parks we manage are environmentally sustainable.

As a Class A cemeteries trust, we take seriously our role in setting industry benchmarks. Committed to a low carbon future, SMCT will put sustainability at the forefront of our procurement activities and implement the best possible waste and recycling initiatives. We will drastically cut our emissions and use energy sustainably, including our commitment to purchasing 100 per cent renewable energy by 2025.

And we will do all of this while increasing biodiversity on our sites, making our historic and modern cemeteries and memorial parks places where high functioning ecosystems are part of our ongoing service to the community.

We are excited about what we are already doing to support a positive environmental future. For our communities and our planet, we look forward to doing everything we can to ensure SMCT is an industry leader in environmental responsibility.

SMCT would like to thank Aurecon Group Pty Ltd for their role in the preparation of this Environmental Strategy.

For further information about our Strategy, please contact our Environment Team on environment@smct.org.au or (03) 8558 8278.

